

# NEWS FOR FARRIERS

FIND AN FPD DEALER NEAR YOU AT [FARRIERPRODUCTS.COM/LOCATIONS](http://FARRIERPRODUCTS.COM/LOCATIONS)

## Kerckhaert Prime Fit NEW SIZE SHIPPING TO AN FPD DEALER NEAR YOU

The Kerckhaert Prime Fit in size 000 is now available!

This shoe offers a competitively priced option for pleasure, trail and ranch horses. The easy-to-fit front and hind shapes will minimize fitting time.



Full 5/16" thick stock has a V-Crease; accommodating a range of American style nails, including Combo Slim, Slim and City. Available unclipped only, in sizes 000, 00, 0 and 1. Sized the same as Kerckhaert Steel Triumph.

Find a dealer near you carrying the Prime Fit » [farrierproducts.com/prime-fit](http://farrierproducts.com/prime-fit)

## Diamond Max Glide



The innovative and unique manufacturing process of the Diamond Max Glide creates a high-quality rasp and file; 10% wider than the standard rasp. The rasp side features a 9-tooth pattern with slightly smaller teeth, and a file side with Chip Breaker.

Find a dealer near you carrying the Max Glide » [farrierproducts.com/diamond-max-glide-rasp](http://farrierproducts.com/diamond-max-glide-rasp)

## JUST A REMINDER

### Liberty Combo Slim Hardtop Nails

The 5 Combo Slim HardTop Nails are the first American style nail with a special hardening process on the top of the head; providing additional wear and strength. The nail head will wear longer and also helps with shoe wear.



### RazorStar™ Belts

EXCELLENT LIFE AND PERFORMANCE



The new RazorStar belts for the FootPro 10" Expander Wheel, 2"x36" and 2"x48" grinder attachments are now available through an FPD Dealer near you.

- Designed for medium to high pressure metal removal in the toughest applications
- Proprietary, 100% engineered shaped ceramic grain is a breakthrough technology from one of the world's foremost grinding innovators

Find a dealer near you carrying RazorStar Belts » [farrierproducts.com/norton-razorstar-belts](http://farrierproducts.com/norton-razorstar-belts)

THE TOOL CORNER

# Tool Maintenance

AS SEEN ON FPD'S BLOG

The overwhelming majority of tools that are returned to manufacturers of top tools are not defective. Most tools show obvious signs of misuse and/or lack of maintenance. Even under correct use you have to realize top tools are not lifetime tools. If you have used your tools properly and taken the time to maintain them you will generally find you get your money's worth.

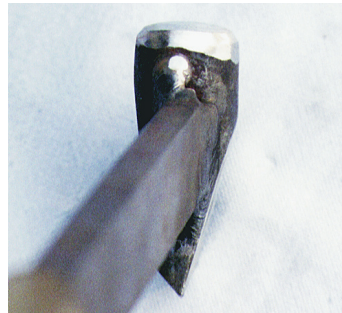
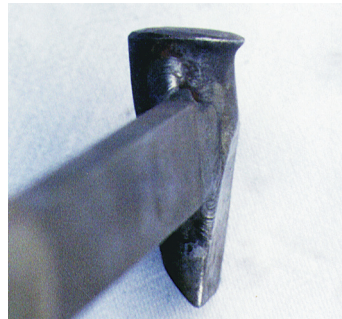
The following photos will give you some idea how simple it can be to extend the life of your tools. When reworking tools, the most useful piece of equipment in your truck or shop is a belt sander or disc grinder. The belt sander serves a dual function, it can also be used to bevel or dress shoes. Most rework is done with no heat in the tool. If you try to forge the tools back into shape you will probably destroy any heat treatment that has been done or create problems with the weld between the mild steel handles and the tool steel head. ■

## JOIN FPD'S MAILING LIST

Join FPD's Mailing List and receive product updates and industry news, as well as the Natural Angle newsletter >> [www.farrierproducts.com/join-fpds-mailing-list](http://www.farrierproducts.com/join-fpds-mailing-list)



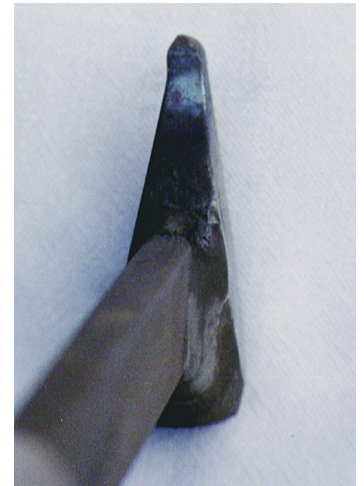
Any struck tool will need cleanup and maintenance on a regular basis. A driving hammer with its edges and the off center blows on a clinch cutter will cause minor mushrooming and then small chips to break loose. Be sure to dome the struck end of your tools and put a good chamfer on the edge.



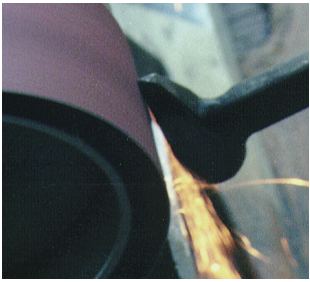
When the head of your forging tools are struck off center often enough this is the result. Both ends of the tool have been deformed. Better hammer control and early cleanup would fix the problem.



This e-head punch has been held too long in hot material and was struck while the tip was too hot.



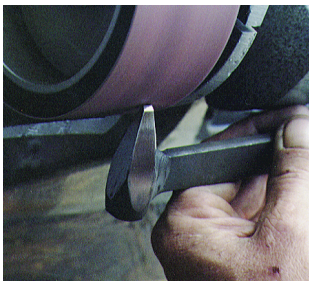




Grind back to desired nail dimension.



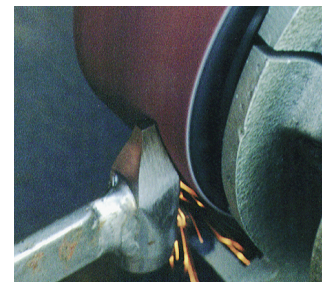
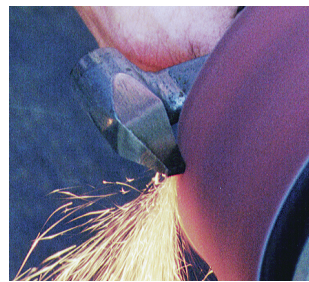
Check against nail or use a guide. This one is made from aluminum.



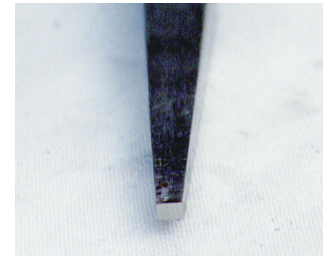
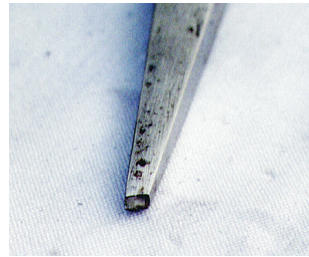
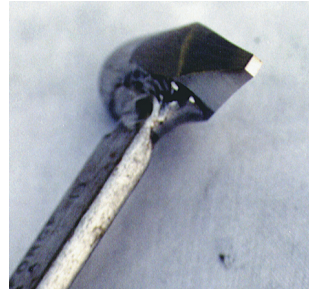
Put point on all forepunch ends. **Right:** Maintained and ready to go back to work.



The tip of this drift was broken. Grind the end back flat.



Grind back to desired dimension, note slight grind curvature behind the tip to keep drift from changing your forepunched hole. An easy fix and it's good as new.



Pritchel with broken tip. Grind end flat. Grind to desired dimension. Use this approach to the wheel for aggressive stock removal.



Use this approach for finish control. Back to work but be more careful and you can avoid the breakage.